

◆ Emergency goods — Prepare the items below in a rucksack!

- | | | |
|--|--|--|
| <input type="checkbox"/> Bankbooks and seals | <input type="checkbox"/> A copy of personal identification | <input type="checkbox"/> Radio, flashlight |
| <input type="checkbox"/> Clothes and towels | <input type="checkbox"/> Sanitary items such as diapers | <input type="checkbox"/> Shoes |
| <input type="checkbox"/> Money | <input type="checkbox"/> Emergency foods | <input type="checkbox"/> Whistle |
| <input type="checkbox"/> First aid items | <input type="checkbox"/> Disaster-Prevention Handbook | <input type="checkbox"/> Water |



◆ Emergency Information and Contact Numbers

Osaka Information Service for Foreign Residents **TEL : 06-6941-2297**

URL : <http://www.ofix.or.jp/life/index.html>

Osaka Disaster Prevention Net

URL : <http://www.osaka-bousai.net/pref/index.html>

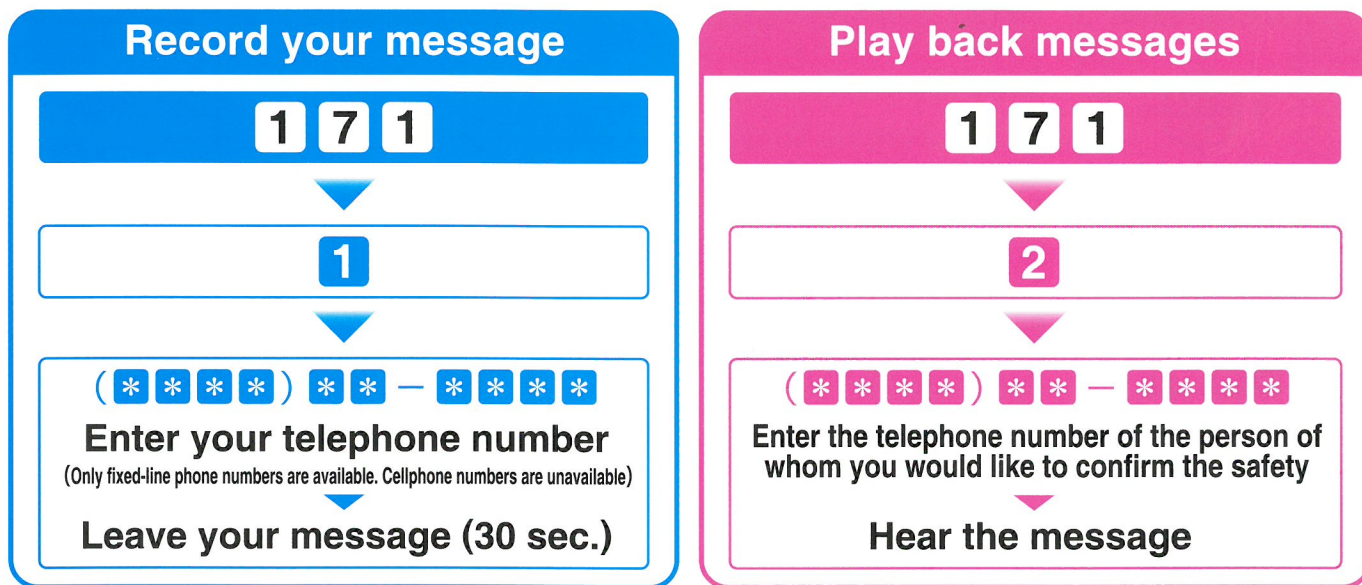
Fire Station (In case of injury and illness) Police Station (In case of incidents and accidents)

TEL : 119

TEL : 110

◆ Safety Confirmation

① NTT Disaster Emergency Message Dial (TEL : 171)



② Disaster Message Board Services of Cellphone Providers

In case of disasters, a sign “Disaster Message Board Service is available” will appear on the display of your cellphone. Check the website of your cellphone company for the information whether they have such a service and what kind of service it is.

Published by Izumiotsu City General Policy Department Crisis Management Division, October 2014
 Shinonome-cho 9-12, Izumiotsu City, Osaka Prefecture TEL: 0725-33-1131 (Main Number)

2014 Izumiotsu International Association Organization

Izumiotsu City Disaster-Prevention Handbook for Foreign Residents (English version)



Earthquakes can occur at any moment. Let's learn how to protect ourselves and evacuate in case of an earthquake. It is also necessary to prepare for an earthquake in your daily life. It is feared that a massive earthquake called the Nankai Trough earthquake will occur. This earthquake will generate big tsunamis and could cause serious damage.

When a big earthquake occurs, smaller earthquakes occur subsequently for a while. The smaller earthquakes are called yoshin (aftershocks).

In case the epicenter of a big earthquake is undersea, huge waves could come to the coasts. The waves are tsunamis.

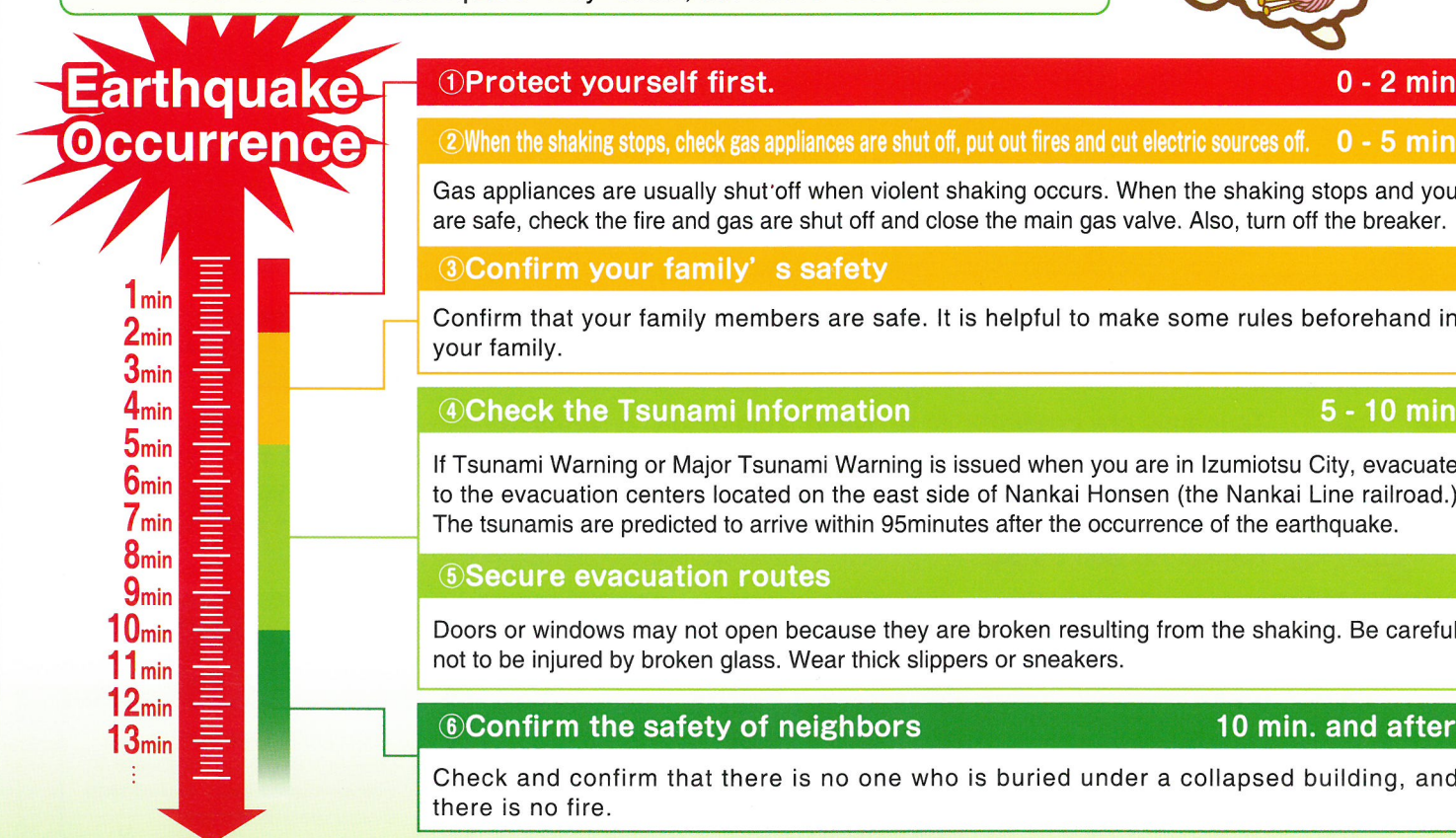


◆ What to do in case of an earthquake!

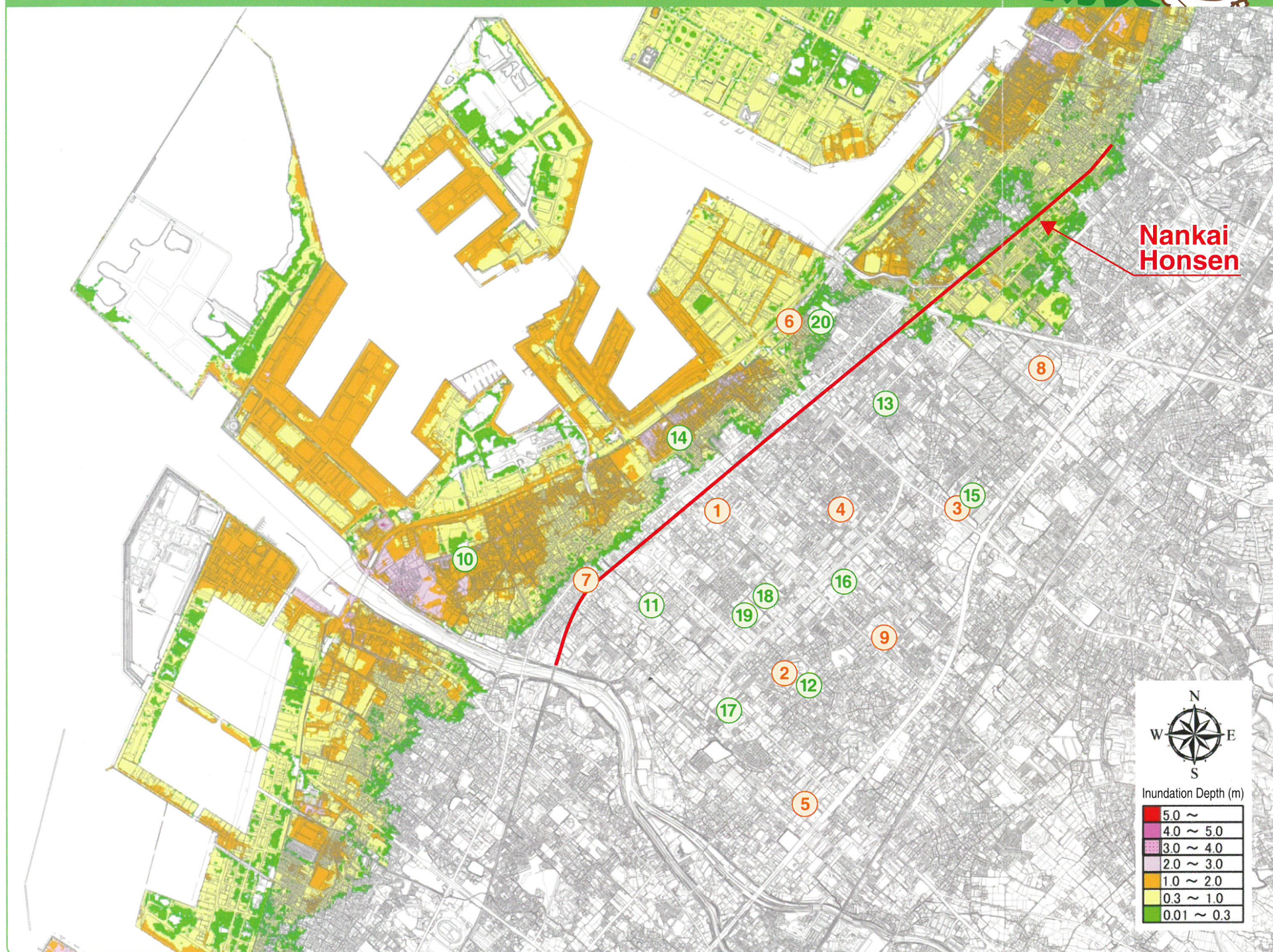
Earthquakes can occur suddenly at any moment. No matter when and where you are, act calmly. To do so, it is important to imagine how to act in case of an earthquake in your daily life.

Tip for proper action in case of an earthquake

Let's not think an earthquake “may” occur, but think it “must” occur.



◆ Izumiotsu City Tsunami Hazard Map



【Temporary Evacuation Centers】

Evacuation centers for temporary evacuation to avoid danger in a time of disaster

Name	Address
① Shinonome Park	In Shinonome-cho area
② Anashi Park	In Ikeura-cho 3-chome area
③ Azeta Park	In Chihara-cho 2-chome area
④ Furuike Park	In Sone-cho 3-chome area
⑤ Sanjugoike Park	In Abiko area
⑥ Sukematsu Park	In Sukematsu-cho 4-chome and Matsunohama-cho 1-chome area
⑦ Ebisu-cho Park	In Ebisu-cho area
⑧ Shinoda High School Sports Field	Kuzunoha-cho 3-6-8, Izumi City
⑨ Izumiotsu High School Sports Field	Kitatoyonaka-cho 1-1-1

【Evacuation Shelters】

Shelters for those who have lost their homes because the houses collapsed, burned down, or were washed away because of the disaster.

Name	Phone Number	Address	Note
⑩ Ebisu Elementary School	21-2000	Kawahara-cho 3-7	Tsunami Evacuation Building
⑪ Asahi Elementary School	21-2002	Showa-cho 2-27	Tsunami Evacuation Building
⑫ Anashi Elementary School	21-2004	Abiko 1-12-10	
⑬ Kamijyo Elementary School	21-2006	Higashi Sukematsu-cho 3-13-1	Tsunami Evacuation Building
⑭ Hama Elementary School	21-2008	Komatsu-cho 5-6	Tsunami Evacuation Building
⑮ Jyoto Elementary School	21-2012	Chihara-cho 2-12-1	
⑯ Jyonan Elementary School	21-2022	Miya-cho 9-1	
⑰ Kusunoki Elementary School	22-0051	Abiko 2-4-7	
⑱ Toyo Junior High School	33-5461	Ikeura-cho4-4-1	
⑲ Seifu Junior High School	33-5761	Ikeura-cho4-1-1	
⑳ Ozu Junior High School	22-6501	Sukematsu-cho 2-13-1	Tsunami Evacuation Building

◆ Basic Plan of Evacuation in case of Tsunamis



Tsunamis are predicted to arrive at Izumiotsu City within 95 minutes after the occurrence of the Nankai Trough earthquake. The maximum height of the tsunamis will be 4.4 meters. Ensure your safety and check the tsunami information immediately after you have felt the strong and long shaking. Evacuate to the evacuation centers located on the east side of the Nankai Honsen tracks.

Earthquake Occurrence

- Major Tsunami Warning or Tsunami Warning has been issued
- You felt strong and/or long shaking
- Evacuation Instruction or Evacuation Recommendation has been announced from the City

Tsunami will arrive within 95 min. after the earthquake occurrence

Evacuate in a horizontal direction

Evacuate to the evacuation centers located on the east side of the Nankai Honsen tracks.

If you cannot evacuate in a horizontal direction by any means, evacuate in a vertical direction

If you failed to escape or cannot move a lot, evacuate to higher places such as Tsunami Evacuation Buildings

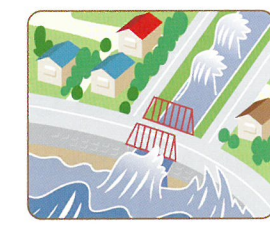
Tips for evacuation in case of Tsunamis



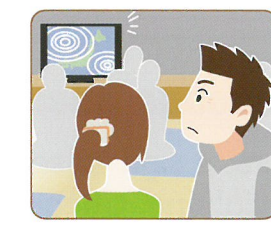
Cooperation with your neighbors is necessary!



Evacuate on foot!



Stay away from the coasts and rivers!



Do not return at your sole discretion!



If you have difficulties in evacuation, evacuate in a vertical direction

In case you don't have enough time to evacuate because you become aware of the warning announcement too late, evacuation is difficult, or for any other reason, evacuate to a Tsunami Evacuation Building. Around the entrance of the buildings, you should see the sign on the right.

